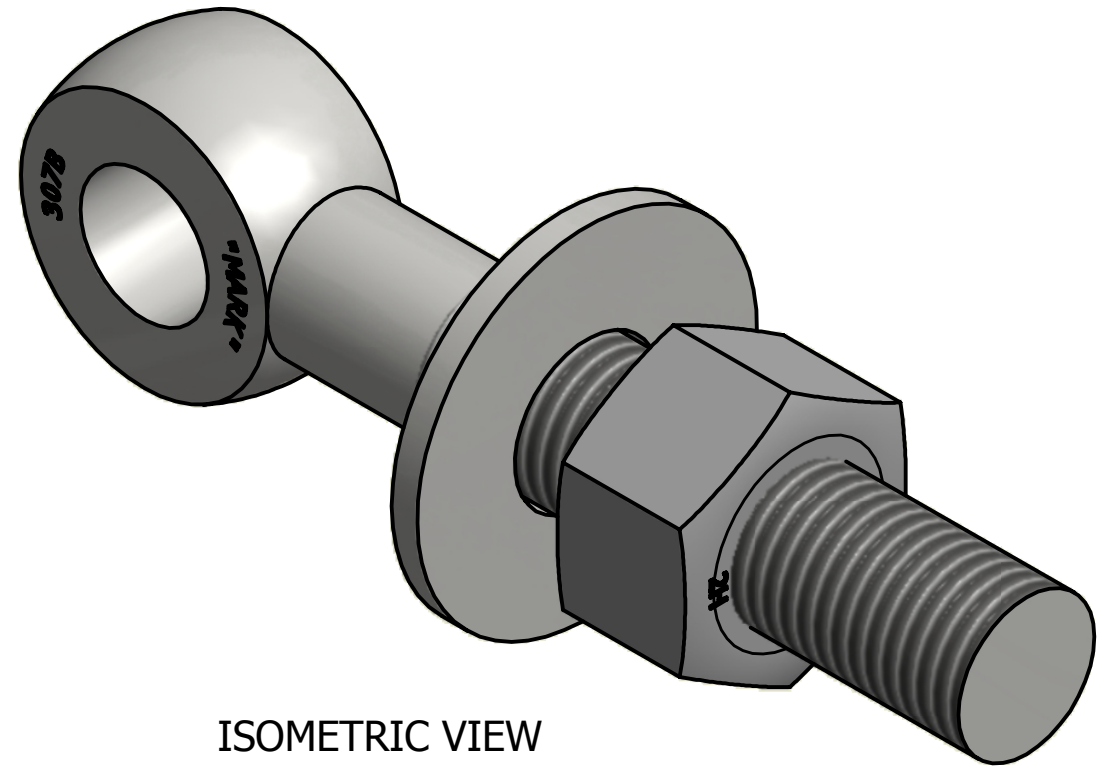
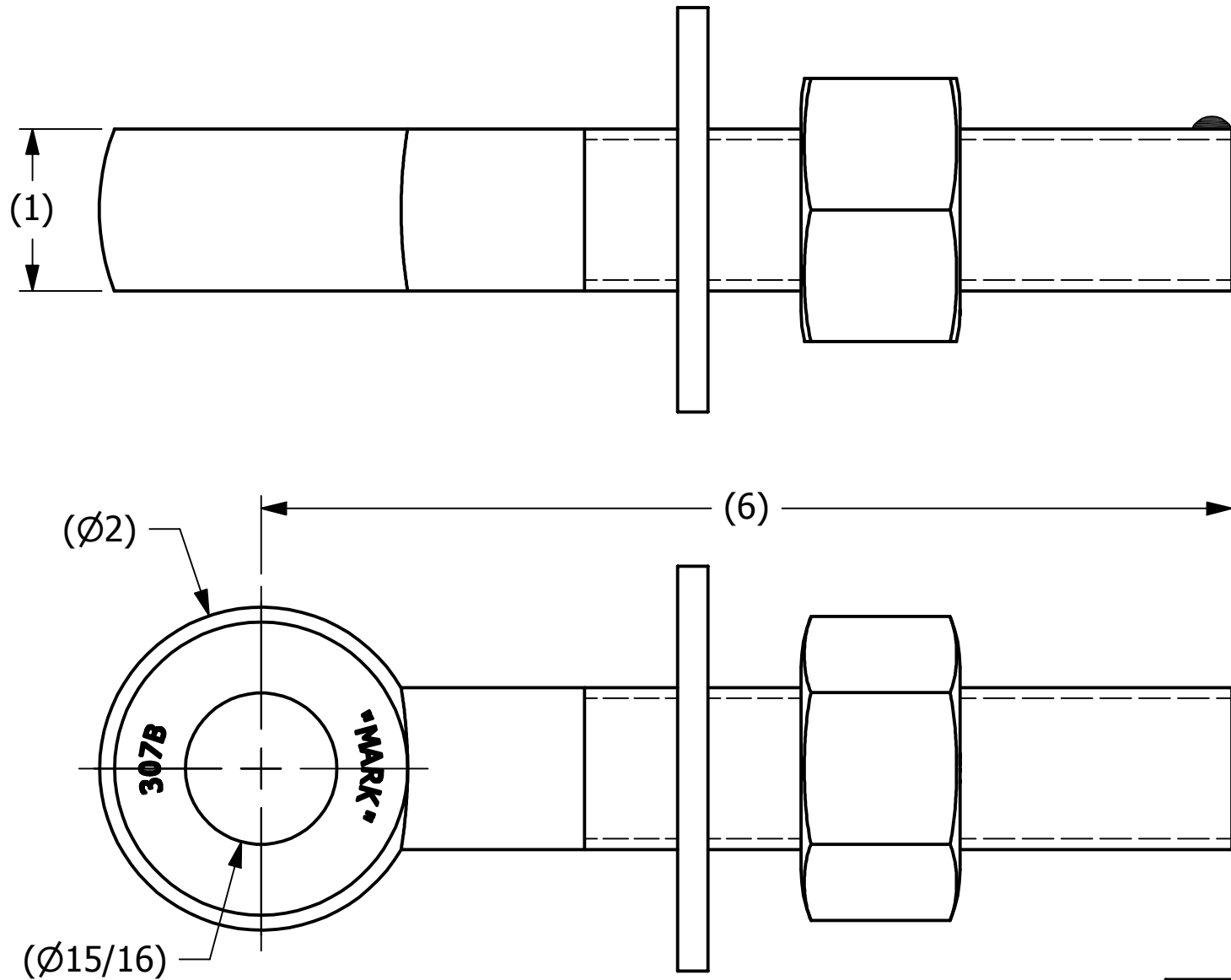


SALES DRAWING

SALES DRAWING



ISOMETRIC VIEW

REV	BY	DATE	DESCRIPTION
F	CHL	9-17-10	CHANGED EYEBOLT MATERIAL
E	CHL	3-13-03	RPLACED A169204 W/WELD STOP, REPLACED EBR16R WITH EBR16, ALL DIMS FRACTIONAL
D	CHL	11-26-01	REPLACED SN14S W/A16204
C	CHL	4-26-01	REPLACED WASH1 W/WASH1P
B	FOD	8-4-99	UPDATED B.O.M., ITEM # 1 WAS EB16R
A	FOD	5-12-99	REVISED DRAWING, ADDED NEW TITLEBLOCK

UNLESS OTHERWISE SPECIFIED DIMENSIONAL TOLERANCES		DRAWN BY:	TJN
FRACTIONAL:	±1/16	CHECKED BY:	
X.XX:	±.03	PROTOTYPE BY:	TJN
X.XXX:	±.015	PROTOTYPE DATE:	1/29/1993
ANGULAR:	±1°	APPROVED FOR PRODUCTION BY:	TJN
THIS PRINT, PROPERTY OF SALCO PRODUCTS INC., CONTAINS PROPRIETARY INFORMATION AND MUST NOT BE COPIED, REPRODUCED, OR USED DETRIMENTALLY TO OUR INTEREST.		PRODUCTION DATE:	1/29/1993
THIRD ANGLE PROJECTION			



PART NAME: EYEBOLT ASSEMBLY 1"X6"		
MATERIAL: CARBON STEEL		
PROJECT #:	SHEET #: 1 OF 1	SCALE: 1:1
DRAWING #: B5215	PART #: EB16XA	

B

B

A

A

4

3

2

1

4

3

2

1